



# SWITCHGEARS

**OFF-LOAD  
ISOLATOR/  
DISCONNECTOR  
800-2500 AMPS  
FRONT  
OPERATED**

## Application

Triple Pole Isolators are used for disconnection of circuits. They ensure that there is sufficient clearance between incoming and outgoing links/busbars or between two busbars when used as Bus-coupler.

This facilitates inspection & maintenance of control gear systems in the Switch Board.

The Isolators are suitable to be used in Distribution Boards, Power Control Centers, Pillar Boxes etc.

## Characteristics-Design

The off load Isolators have a single break contact system.

Moving contacts are designed as double or multiple contacts. The fixed contacts have large cross-section. The conducting parts are made of high quality electrolytic copper, silver plated.

Solid, Large contacts, high contact pressure and excellent self cleaning action ensure safe and reliable operation and high ratings e.g. short circuit current as per IEC 408 & IEC 947.

## Isolating Parts

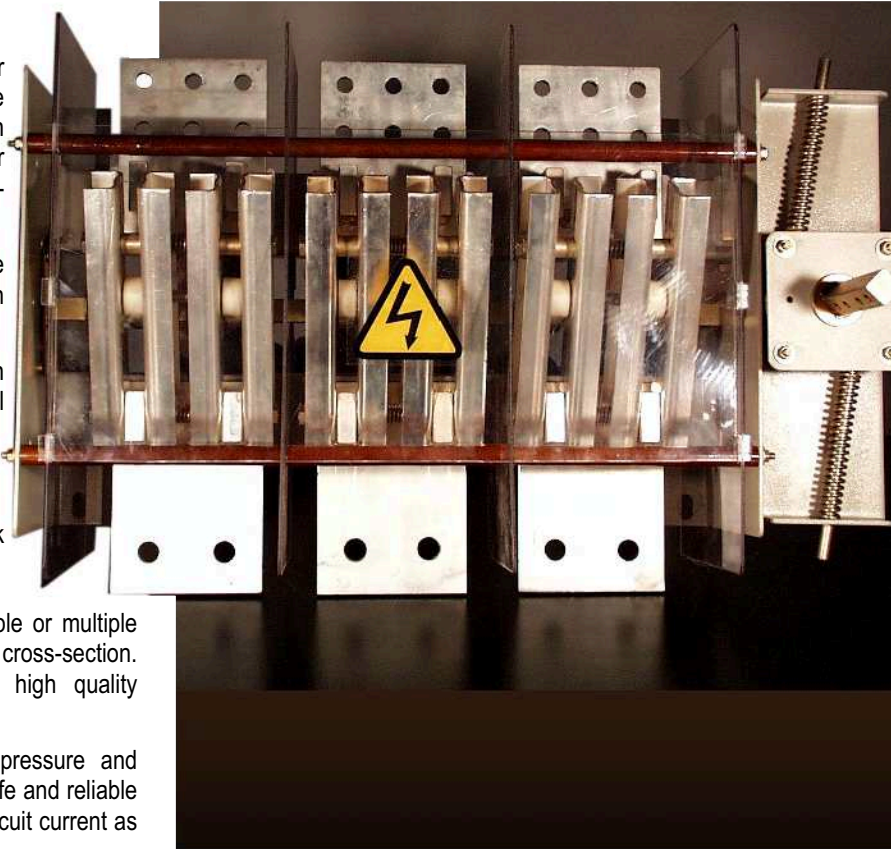
The isolating parts are manufactured of glass reinforced polyester/DMC with excellent mechanical, thermal and electrical endurance - non tracking properties and self extinguishing type.

## Operating - Handles

Standard design is front operated - spring actuated with padlock provision. Operational execution with side lateral handle is available on request.

## Special Features

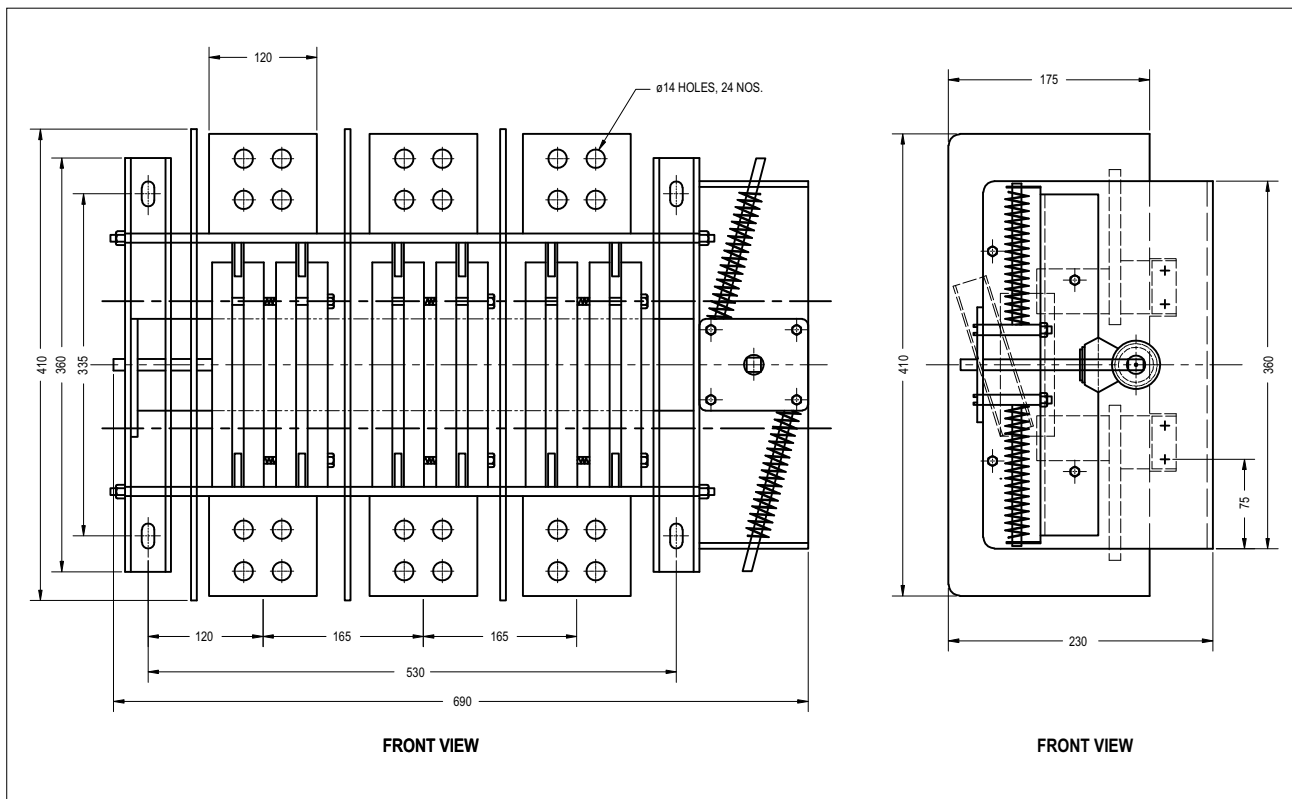
- ▶ Solid heavy duty design.
- ▶ Strong & sturdy contact system.
- ▶ Quick make & break mechanism ensures independent operation.
- ▶ Large isolating & creeping distance.
- ▶ High Short-circuit Rating.
- ▶ Easy mounting.
- ▶ Available with door interlock & padlock arrangement.



**Tested Power...Trusted Solution**

## OFF-LOAD ISOLATOR/DISCONNECTOR 800-2500 AMPS FRONT OPERATED

### Installation Details : GDI-3/2500



### Technical Details

Type/Data	GDI-3/2500	GDI-3/1600	GDI-3/800
Rated Voltage	660V, 50Hz	660V, 50Hz	660V, 50Hz
Rated Thermal Current	2500A	1600A	800A
Short time withstand current 1 Sec. rating as per IEC	50 kA rms	50 kA rms	50 kA rms
Short time current			
-Dynamic	105kA	105kA	105kA
-Thermal	50kA rms	50kA rms	50kA rms
Mechanical Endurance	1000	1000	1000
Ambient Temperature	Upto + 55°C	Upto + 55°C	Upto + 55°C

**Note:** The company follows a policy of continuous development and improvement of its products and hence products supplied may differ from those described & illustrated in this catalogue.



### ASIATIC ELECTRICAL & SWITCHGEAR P. LTD.

(FORMERLY ASIATIC ELECTRONIC INDUSTRIES)

#### Registered Office:

A 58, Naraina Industrial Area, Phase-I, New Delhi - 110 028, India.  
Tel.: +91-11-25796330, 25796617, Fax: +91-11-25799816, 45082346  
E-mail: asiatic@asiatic-india.com