



SWITCHGEARS

**HRC -
FUSE SWITCH,
VERTICAL DESIGN
FOR BUS BAR
MOUNTING
250A, 400A &
630A, 415V AC,
SIZE 1, 2, 3.**

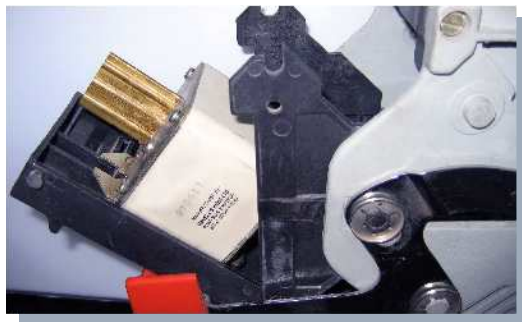
Suitable for Single/Triple Pole Switching

The Fuse Switches are suitable to be used in Distribution Boards, Power Control Centers, Cable Pillar Boxes etc. The fuse switches guarantee operational safety against accidental contact and have adequate breaking capacity.

Due to their compact design & easy mounting, it is economical to use vertical type fuse switches in the LV Distribution boards. The overall dimension of the LV Distribution boards are reduced with their use and therefore the total cost of the switchgear is thus essentially cutdown.

Characteristics

- ▶ The fuse switch can be closed on the short circuit fault without danger to the operator.
- ▶ High making and breaking capacity, utilization category AC 22 as per IEC 947 and also high degree of short circuit making capacity.
- ▶ Body is made from high quality glass fiber-reinforced polyster (DMC) which is mechanically strong, heat resistant & self-extinguishing type. The contacts are of copper silver plated, spring assisted provided with arc chutes with adequate number of splitter plates for quenching the arc. The arc chutes are provided on top and bottom thereby making this design a Double Break arrangement which in turn increases the life of the fixed contacts.
- ▶ The downward connections are of electrolytic copper tin plated which are brought to one level at the bottom for cable termination with phase L1 on the left hand side. The hinged front cover is 3xSingle Pole/Triple-Pole Switchable.
- ▶ Protection against accidental contact with live parts even if the switch cover is open.
- ▶ HRC Fuse Switches generally meet the requirement of IEC 947.



Tested Power...Trusted Solution

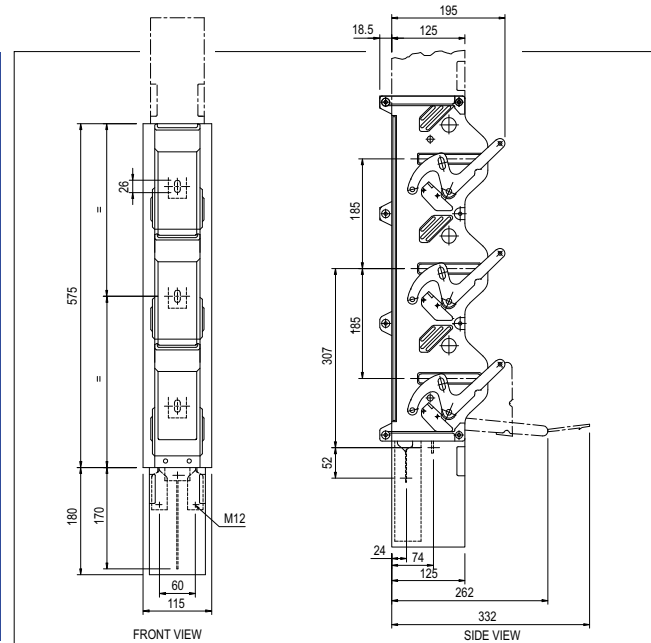
HRC - FUSE SWITCH, VERTICAL DESIGN FOR BUS BAR MOUNTING 250A, 400A & 630A, 415V AC, SIZE 1, 2, 3. SUITABLE FOR SINGLE/TRIPLE POLE SWITCHING

Installation

Fuse Switches can be installed in the LV Distribution board at a center to center assembly distance of 115 mm and a depth of 195 mm. These can be directly bolted on the bus bars spacing 185 mm as per DIN 43623 Form B.

Easy cable termination is possible at the bottom of the fuse switches without any strain on the terminals.

Dimensions



Technical Details

Type/Data	GDVS:SP-3/250A	GDVS:SP-3/400A	GDVS:SP-3/630
Operating Voltage	415V, 50Hz	415V, 50Hz	415V, 50Hz
Rated Thermal Current	250A	400A	630A
Rated Operating Current Category AC 22 at Cos 0.65 as per IEC 947	250A	400A	630A
Making Capacity & Short Circuit Strength	50 kA (with fuse)	50 kA (with fuse)	50 kA (with fuse)
Short time withstand current (1 Sec. rating) as per IEC	5 kA rms	8 kA rms	12 kA rms
Fuse size IEC/DIN	Size - 1	Size - 2	Size - 3
Mechanical life & No. of Cycles	1000	1000	1000
Ambient Temperature	Upto + 55°C	Upto + 55°C	Upto + 55°C
Weight (approx.)	7.3 kg	7.3 kg	8.0 kg

Note: The company follows a policy of continuous development and improvement of its products and hence products supplied may differ from those described & illustrated in this catalogue.



ASIATIC ELECTRICAL & SWITCHGEAR P. LTD. (FORMERLY ASIATIC ELECTRONIC INDUSTRIES)

Registered Office:

A 58, Naraina Industrial Area, Phase-I, New Delhi - 110 028, India.
Tel.: +91-11-25796330, 25796617, Fax: +91-11-25799816, 45082346
E-mail: asiatic@asiatic-india.com